

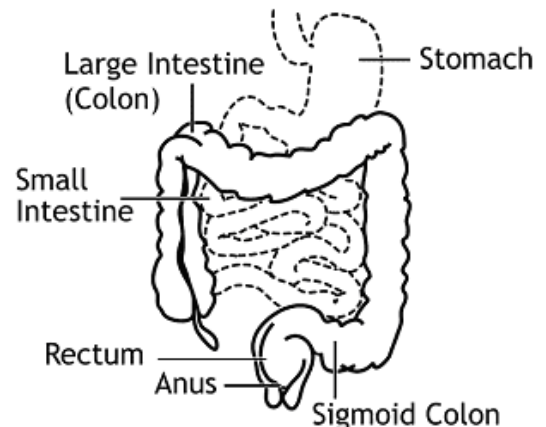
PillCam SB Capsule Endoscopy

Capsule endoscopy with the PillCam SB video capsule enables your doctor to examine your entire small intestine. Your doctor will have you ingest a video capsule that has its own camera and light source. You can move freely during the exam, which usually lasts about eight hours. While the video capsule travels through your body, it sends images to a data recorder you will wear close to your waist. Afterwards your doctor will view the images on a video monitor.

Preparation

To cleanse the small intestine takes special preparation before the examination. An empty stomach allows for optimal viewing conditions, so you should start a liquid diet after lunch the day prior to the examination and have nothing to eat or drink, including water, for approximately 10 hours before a small bowel examination.

Tell your doctor in advance about any medications you take as you may need to adjust your usual dose for the examination. Inform your doctor of your medical history, including if you have a pacemaker or other electro medical devices, any previous abdominal surgery, swallowing problems, or previous history of obstructions in the gastrointestinal tract.



PillCam Procedure

The doctor or nurse will prepare you for the examination by placing sensors on your abdomen. The video capsule is swallowed with water and passes naturally through your digestive tract while transmitting video images to a data recorder that you will wear close to your waist. You will be able to eat four hours after the capsule ingestion, unless instructed otherwise. The examination is approximately over eight hours; however this time may vary depending on the patient.

Post Procedure

At the end of the procedure, the data recorder and sensors will be removed and the images acquired during your exam will then be downloaded to a workstation for your doctor to review. After ingesting the capsule and until it is excreted, you should not have a Magnetic Resonance Imaging (MRI) examination or be in the vicinity of an MRI machine.

After you return the equipment, your doctor will process the information from the data recorder and will view a colour video of the pictures taken by the capsule. After the doctor has looked at this video you should be contacted with the results. A copy of the report will also be forwarded to you, along with your general practitioner and referring doctor.

The capsule is disposable and passes natural with your bowel movement. You should not feel any pain or discomfort.

Risks

PillCam capsule Endoscopy is not for everyone. Risks include capsule retention, aspiration, or skin irritation. The risks of the Agile GI patency test include capsule retention and aspiration. Endoscopic placement may present additional risks. Medical, endoscopic, or surgical intervention may be necessary to address any of these complications should they occur. Please consult your specialist or refer to www.givenimaging.com for additional information.

If you have any questions about this information, discuss these before you attend your procedure. You can telephone on the numbers below if needed.

Contact Details

Private	Mater Private Hospital – Endoscopy Unit Level 6 Mater Private Hospital 301 Vulture Street, South Brisbane QLD 4101 Phone: 07 3163 1044 Fax: 07 3163 1185
Rooms	Mater Hill Gastroenterology Suite 2 Level 2 Salmon Building 537 Stanley Street South Brisbane QLD 4101 Phone: 07 3163 7820 Fax: 07 3163 1371
Emergency	Mater Private Emergency 301 Vulture Street, South Brisbane QLD 4101 Phone: 07 3163 1000 Fax: 07 3163 1032